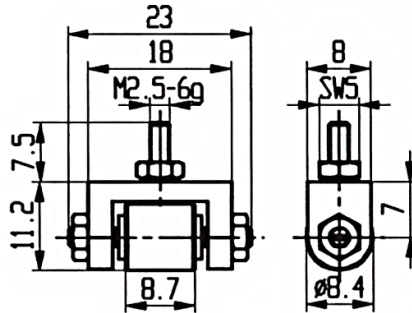
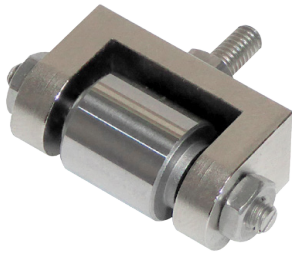


Zubehör Tastspitzen für Wegsensoren

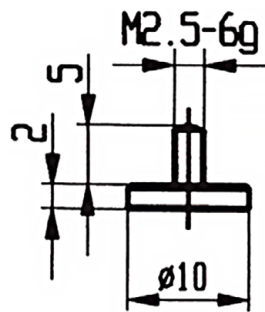
Typ 8712, 8713, 8738, 8739 und 8741

Typ 8741-Z008



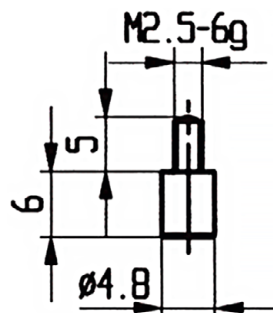
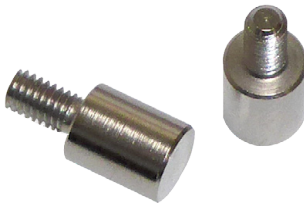
- Tastrolle
- Einstellmutter
(Nur für Wegsensoren mit
Verdrehschutz)

Typ 8741-Z004



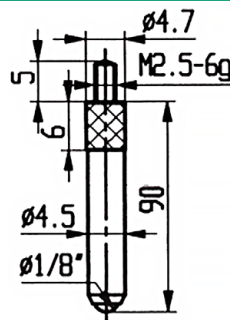
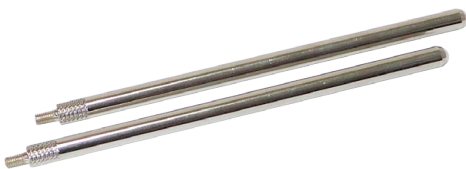
- Messeinsatz
- Plan, Ø 10 mm

Typ 8741-Z003



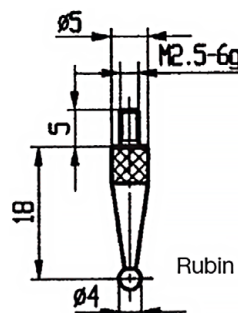
- Messeinsatz
- Plan, Ø 4,8 mm

Typ 8741-Z009



- Kugelmesseinsatz
- L = 90 mm

Typ 8741-Z005



- Messeinsatz mit
Rubinkugel
- Ø 4 mm

Weitere Tastspitzen auf Anfrage.