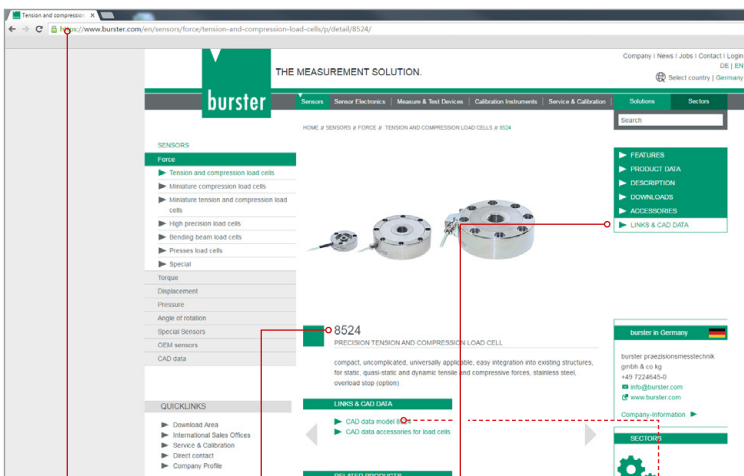


# CAD data

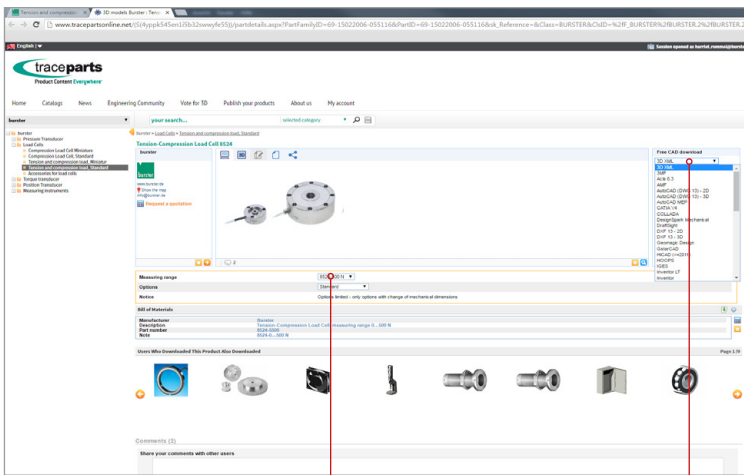
## OUR PRODUCTS IN THE INTERNET.

You can integrate CAD data for our sensors and several process instruments directly into your CAD system with just a few simple steps.

This quick guide shows you how to find product-specific CAD data on our website [www.burster.com](http://www.burster.com)

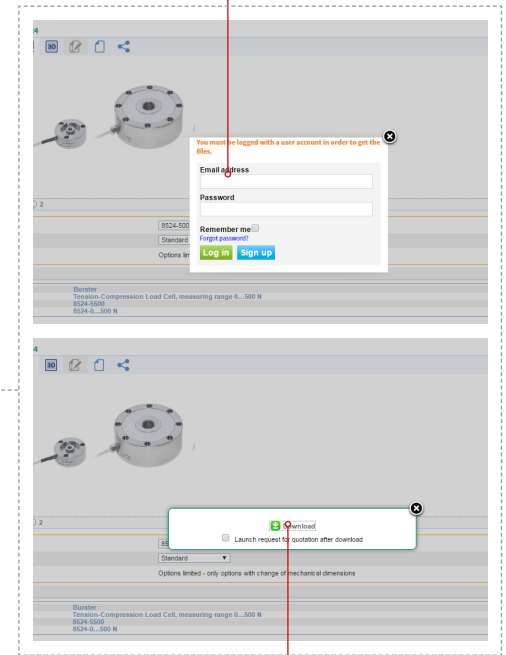


1. [www.burster.com](http://www.burster.com) → Product → Links & CAD Data 2. Click on the link



3. Select measuring range 4. Select CAD format

5. Log in or register



6. Download the generated file any time, any place

### General information

If you often need to access CAD data for several components from a single manufacturer, you can download all of the manufacturer's CAD data as a component catalogue at <https://www.traceparts.com/en>. TracePart is available free of charge to millions of CAD users worldwide. It contains hundreds of manufacturer catalogues and hundreds of millions of CAD models as well as product documents for the design, purchasing, production and maintenance processes in industries including drive technology, electrical engineering, electronics, energy management, factory auto-mation, manufacturing technology, materials and materials engineering, mechanical and plant engineering, mechanics, mechatronics, measurement and control technology, and robotics.