



Direktkontakt / Direct Contact:

(+49) 07224-645-78 oder/or (+49) 07224-645-45

burster

Produktabkündigung zum 01.07.2023 Product Discontinuation on July 1st, 2023

TYP 8645/8646



Sehr geehrte Damen und Herren,

nach 20 Jahren Produktlaufzeit stellen wir den Verkauf des Drehmomentsensor **Typ 8645** und **Typ 8646** zum **01.07.2023** ein.

Den Verkauf dieses Produktes bieten wir Ihnen bis zum Verbrauch des restlichen Lagerbestandes an.

Sollten Sie ein Ersatzprodukt (z.B. den Drehmomentsensor Typ 8656) oder Informationen über den Lagerbestand benötigen, setzen Sie sich bitte mit Ihrem bisherigen Ansprechpartner/Vertretung in Verbindung oder kontaktieren Sie uns unter:

Michel Kast

michael.kast@burster.de
Tel. (+49) 07224-645-78

Michael Frohberg

michael.frohberg@burster.de
Tel. (+49) 07224-645-45

Dear Sir or Madam,

after 20 years of product life we will discontinue the sale of Torque Sensor **Model 8645** and **Model 8646** on **July 1st, 2023**.

We offer the sale of this product until the remaining stock is used up.

If you need a replacement product (e.g. Torque Sensor Model 8656) or information about the stock availability, please do not hesitate to get in touch with your regional contact person/sales office or contact us at:

Michael Kast

michael.kast@burster.com
Tel. (+49) 07224-645-78

Michael Frohberg

michael.frohberg@burster.com
Tel. (+49) 07224-645-45

SUPPORT / SERVICE / REPARATUR / ERSATZTEILE

Über unseren Bereich burster Service werden wir noch einen Support des oben genannten Produktes anbieten können, auch Kalibrationen Ihres Sensors sind in Zukunft möglich.

SUPPORT / SERVICE / REPAIR / REPLACEMENT PARTS

Our service department will be able to offer a support of the above product, we will also be able to calibrate your sensor in future.

burster präzisionsmesstechnik gmbh & co kg

Talstraße 1-5
76593 Gernsbach - GERMANY

info@burster.com
Tel. (+49) 07224-645-0

Torque Sensor rotating, non-contact transfer

MODEL 8645



Model 8645 with round shaft

Highlights

- Measuring range 0 ... 2.5 N·m to 0 ... 500 N·m
- Extended temperature range -40 °C ... 85 °C
- High axial forces allowed
- Integrated amplifier

Areas of application

- Automotive (steering, gearing, motors)
- Textile machines
- Pumps, mechanical conveying technology
- Fitness and workout gears, household appliances

Product description

This sensor uses a non-contact and maintenance-free technology to convert the torque into an electrical signal. The nickel steel shaft is conditioned with a permanent magnetic pattern. Apart from this, no other components such as strain gages or wiring are required on the shaft.

The magnetic pattern changes as a result of the torque being measured. This produces a measurement signal that is dependent on the torque. Via the integrated amplifier, the sensor supplies an output voltage of 0.5 ... 4.5 V. The zero point is at 2.5 V, which makes it easy to evaluate the direction of torque.

Technical Data

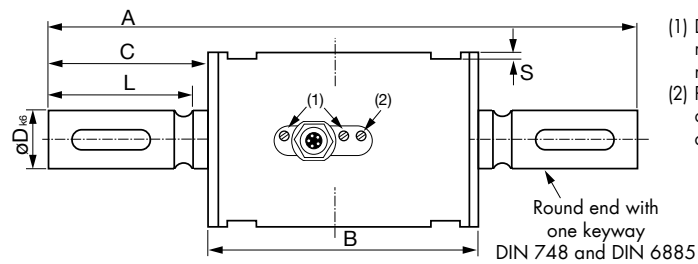
8645	-	5002.5	5005	5007.5	5017.5	5075	5175	5250	5500	
Measuring range 0 ...		±2.5 N·m	±5 N·m	±7.5 N·m	±17.5 N·m	±75 N·m	±175 N·m	±250 N·m	±500 N·m	
Measurement accuracy										
Relative linearity error		<±1 % F.S.								
Relative reversibility error		<±1 % F.S.								
Relative repeatability error		<±0.1 % F.S.								
Temperature effect on zero signal		<±0.1 % F.S./K								
Temperature effect on characteristic value		<±0.1 % F.S./K								
Electrical values										
Excitation voltage		6 ... 15 V DC								
Excitation current (40 mA for a period of 10 ms at the start)		10 mA								
Analog output signal (dependent on sensor)		≈0.5 V ... 4.5 V DC								
Signal output at 0 Nm (depending on sensor)		≈2.5 V DC								
Output resistance		50 Ω								
Cut-off frequency (-3 dB)		1 kHz								
Environmental conditions										
Operating temperature range		-40 °C ... +85 °C								
Resistance to magnetic field		max. 300 kA/m at distance 70 mm (4000 Oe) (Do not apply torque sensor within dynamic magnetic fields, e.g. near high running motors.)								
Mechanical values										
Resolution		0.1 % F.S.								
Rotary speed		max. 5000 min ⁻¹								
Max. operating torque		150 % of nominal torque								
Breaking moment		300 % of nominal torque								
Protection class (acc. EN 60529)		IP50								
Shaft material housing		NiCrNi 14								
Mechanical connection										
		both shaft end with keyway acc.				measuring range 250 Nm	1 keyway acc. DIN 6885-1A			
						measuring range 500 Nm	2 keyways acc. DIN 6885-1A			
Mounting										
Mounting instructions		For mounting the sensor it should be respected that the shafts are arranged exactly in line to the connecting shafts. There should not exist any axial and radial load. To avoid that please use flexible shaft couplings, torsionally stiff. The four flats on the housing should be only used to secure the sensor against rotation. Refer to clamps and accessories. Avoid any axial or radial load between housing and shaft during the installation.								
Sonstiges										
Axial force	[N]*	1000				2600	4000		7000	
Lateral force	[N]*	20	30	100	300	500		800		
Bending moment	[Nm]*	2.5	3.7	12.5	41.7	89.5		176		

* Every irregular exposure (axial force, lateral force, bending moment, overstepping of max. operating force) is acceptable if only one of them occurs. Axial load = load applied directly to the shaft. Only 50 % of the load is permissible if the load is applied to the retaining ring/bearing. See the supplied test certificate for the exact sensor-specific values.

Geometry

Dim. tolerance acc. ISO 2768-f

8645	-	5002.5	5005	5007.5	5017.5	5075	5175	5250	5500
A	[mm]	125				139	179		220
B	[mm]				70				87
C	[mm]	27.5				34.5	54.5		66.6
$\varnothing D_{k6}$	[mm]	9				14	19		25
$E^{+0,3}$	[mm]	40				50			60
F	[mm]	-							
G	[mm]				8				10.5
H	[mm]				5				2
K	[mm]	12				18	24		33.5
L	[mm]	-							
M	[mm]				43.9				61.4
N	[mm]	15				18			19
P	[mm]	37				47			57
S	[mm]	1.5							
Moment of inertia	[g·cm ²]	5.97		6.62	10.73	49.22	191.26		797.54
Weight	[g]	400			450	700	900	1000	1300

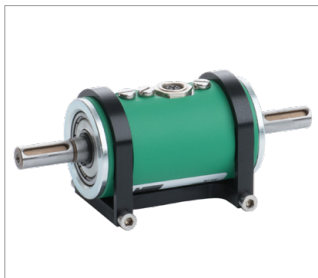
Dimensional drawing **model 8645** – round ends

Wire code cable				
		Wire code		Connection at sensor
Excitation		+ white		1
Signal output		+ brown		2
Excitation/signal GND		- black		3
Free		blue		4
Reference voltage		Vref (2.5 V) grey		5

Upon delivery without mounted connector please use a connector with shielding. Generally the shielding should escort the signal as far as possible. The use of another cable than the one included in delivery can affect the proper function of the sensor system.

Accessories

Order code	
99195-000A-0090050	Connecting cable length 5 m, one end free (included in delivery)
8645-Z003	Clamp for 8645 for ranges up to 17.5 Nm
8645-Z004	Clamp for 8645 for ranges from 75 Nm



8645-Z003



8645-Z004

Order Code 8645

Measuring range	Code			
0 ... ±2.5 N·m	5	0	0	2,5
0 ... ±5 N·m	5	0	0	5
0 ... ±7.5 N·m	5	0	0	7,5
0 ... ±17.5 N·m	5	0	1	7,5
0 ... ±75 N·m	5	0	7	5
0 ... ±175 N·m	5	1	7	5
0 ... ±250 N·m	5	2	5	0
0 ... ±500 N·m	5	5	0	0
	⋮	⋮	⋮	⋮
8	6	4	5	-

Note

■ Brochure

Our brochure „Torque sensors for production, automation, R&D and quality assurance“ is available for download on our website. It contains numerous applications, detailed product specifications and overviews.

■ Product videos

Watch our **product videos** at: www.youtube.com/bursterVideo



■ CAD data

Download via www.burster.com or directly via www.traceparts.com

