

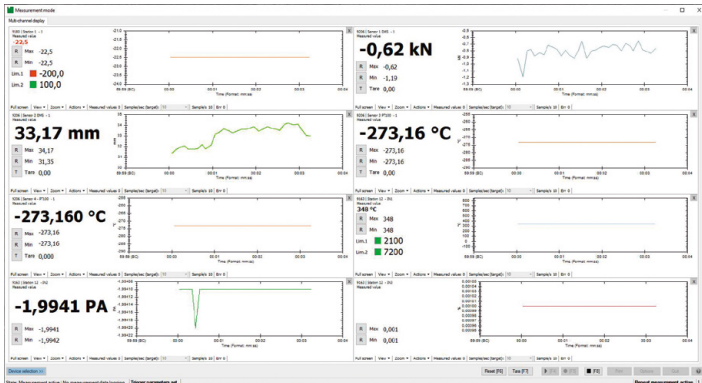


Direct line: +49 7224 645-18
Warranty: 24 months



UNIVERSAL MEASUREMENT SOFTWARE

DigiVision



DigiVision measurement mode, multi-channel view

Highlights

- Automatic device detection
- Parameterization of instrumentation amplifiers and digital indicators
- Measure mechanical parameters
- Graphical and numerical display of measured values
- Multi-channel capability: measurement channels and math channels
- Multiple trigger functions for partial automation

Applications

- Research and development
- Calibration laboratory
- Mechanical engineering
- Mobile measurements
- Testing and inspection stations

Product description

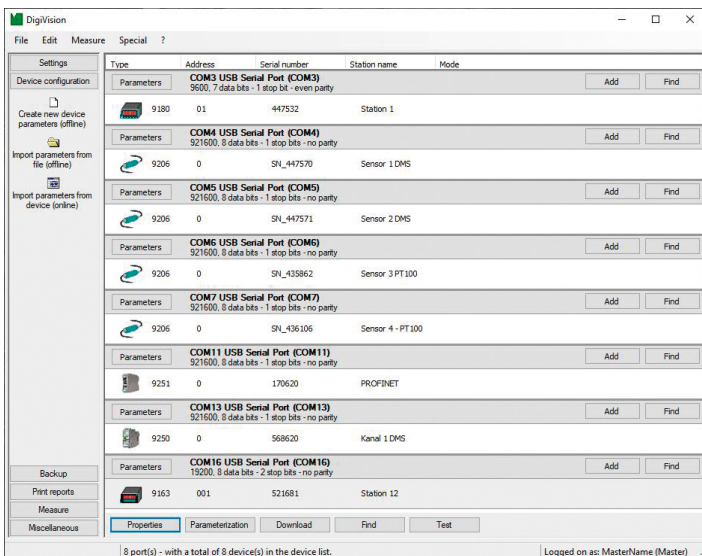
DigiVision is the universal measurement and parameterization software for burster products.

DigiVision gives you access to all functions needed to parameterize instrumentation amplifiers and digital indicators.

- Sensor-specific calibration
- Set limit values
- Select measurement speed
- Backup feature for device-specific data backup
- Service mode for setup (support)

In measurement mode, multiple functions are available for recording and visualizing measurement data. Whether single-channel or multi-channel measurement, DigiVision can be optimally configured for your application. In addition to displaying and recording measurement data, live mathematical operations can be performed, for example power calculation for torque sensors with a speed signal.

- Graphical and numerical display of measured values
- Up to 16 measurement channels and 16 mathematical channels
- Automatic Excel export of measurement data
- Multiple trigger functions for automated measurement data acquisition
- Software remote control via communication interface



DigiVision home screen

DigiVision measurement software

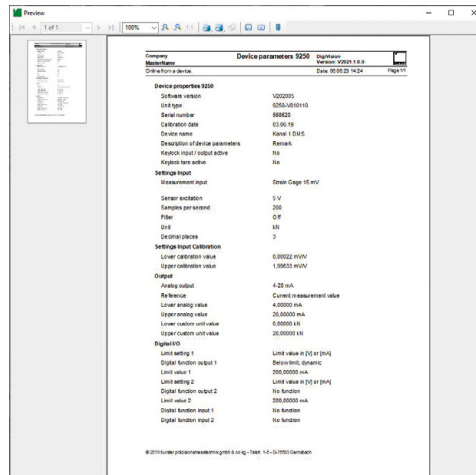
Compatible with the following products:

- Torque sensors: 8661, 8656, 8655, 8625, 8630, 8631
- Instrumentation amplifiers: 9206, 9250/9251 (only parameterization)
- Digital indicators: 9163, 9180

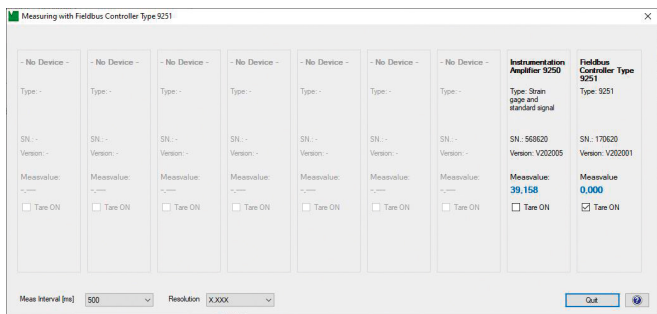
Features

- Simultaneous measurement of up to 32 channels (16 measurement channels plus 16 mathematical channels; each measurement channel can be tared separately)
- Separate parameterization of each individual measurement channel
- Documentation of measurement data in Excel format
- Multiple naming options: e.g. "component", "batch", "serial number" via running counter
- Automatic data acquisition via start and stop triggers
- Live calculation of measurement data via mathematical channels
- Four graphical limit switches configurable
- Software remote control via PC interface

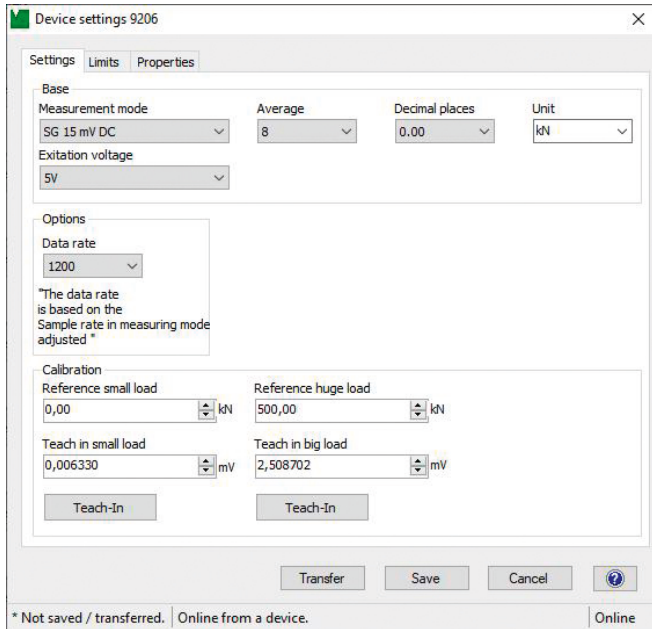
License model: Single-user license



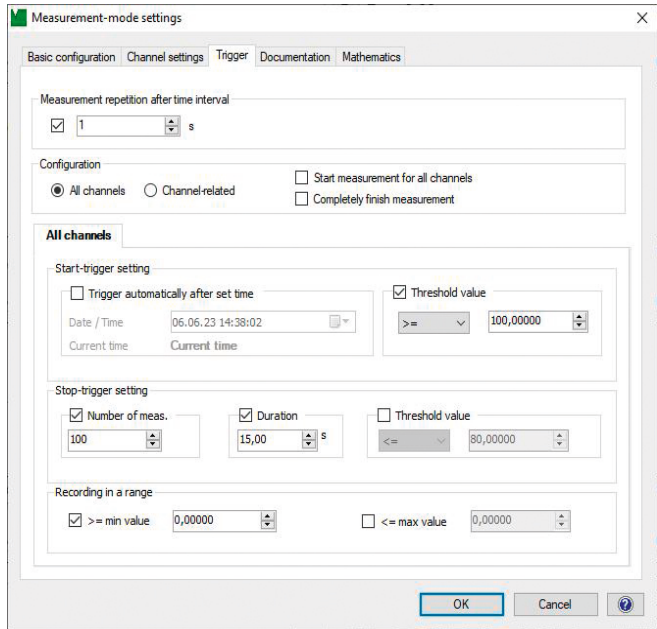
DigiVision parameter print



DigiVision service mode



DigiVision parameter settings



Trigger settings for automated measurement data acquisition

Product variants

Product variants	
Xxxx-P001	Free version for parameterization
Xxxx-P100	Measurement software for up to 16 measurement channels
Xxxx-P200	Measurement software for up to 32 measurement channels (mathematical function)