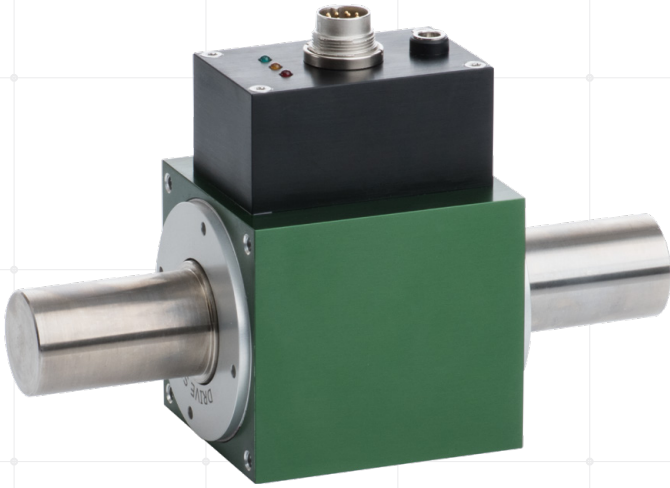


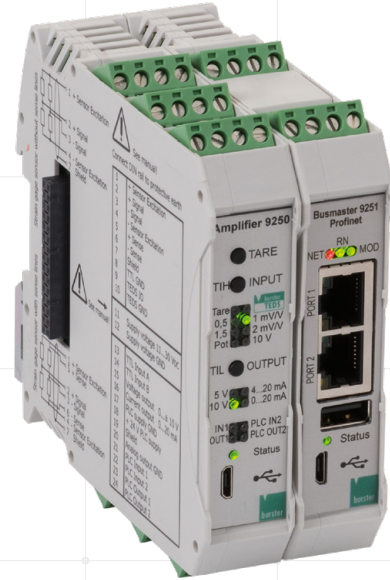
SENSOR SOLUTIONS

Ready for Industrial Ethernet und Industry 4.0



Model 8661

Rotating torque sensor incl. rotation speed and angle of rotation measurement



Model 9250 and Model 9251



High-precision torque sensor 8661 with Instrumentation Amplifier 9250 and Fieldbus Controller 9251

- Fieldbus interface to PROFINET, EtherCAT or EtherNet/IP
- High measurement speed with up to 1000 measurements per second
- Extremely high system accuracy
- 2 channels – one fieldbus connection
- Measurement ranges model 8661 controllable via Fieldbus (Option: dual range version)
- Measuring ranges from 0 ... 0.02 N*m up to 0 ... 1000 N*m
- Rotation speed measurement from 0 ... 25000 1/min
- Intelligent LED status bar
- Torque measurement via the analog input on the Fieldbus Controller 9251
- Rotation speed/angle of rotation measurement via the TTL input on the Instrumentation Amplifier 9250

Simple, flexible, traceable and modular ...

