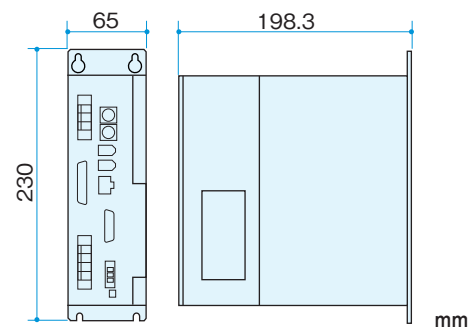


AC SERVO NUTRUNNER



Dimension



How to order

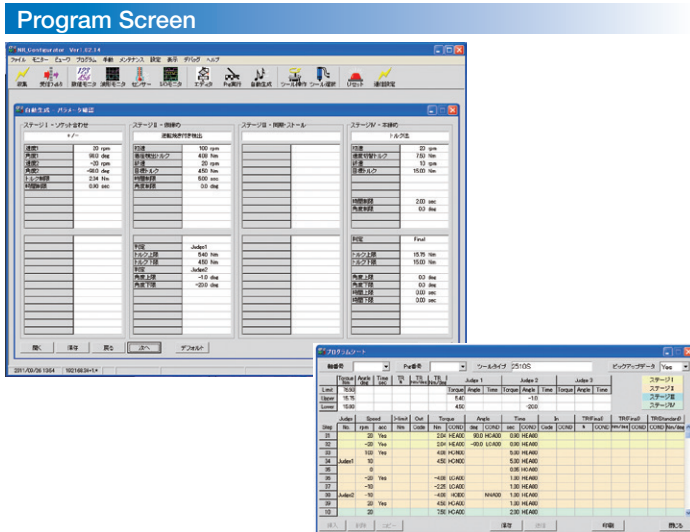
CPS - NR - 75 \* - □

Hardware      FA network (optional)

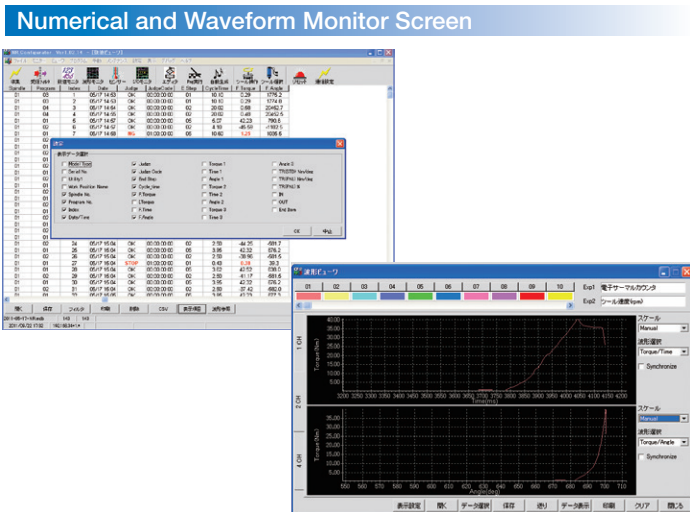
Software      CC: CC-Link  
DV: DeviceNet  
PF: Profibus  
PN: PROFINET IO  
EI: Ethernet/IP



We provide various more "AC Servo" related products.  
Please feel free to contact us for any further information.



Program format is developed on the basis of the IPS model software.  
In addition to final judgment, further judgments at 3 arbitrary points can be set up.  
Automatic program generator is on-board.  
With automatic checking function of input errors, programs can be reliably created.



Numerical screen displays up to 31 selectable items as numerical results;  
including "Model Type" and "Work Position Name." \*  
Traceability function is available by linking product serial number and execution result. \*  
Waveform monitor displays multiple channels on the screen.  
Extended items for waveform monitor are available: Tool speed, torque rate and more.  
(\*: optional function)

The specifications may modify without notice.

AC SERVO NUTRUNNER



CORETEC

CORETEC INC.

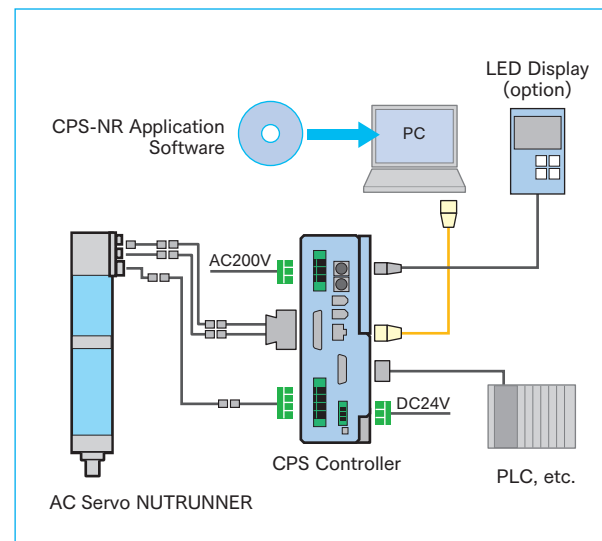
Headquarters:  
500 Akahama, Soja-shi, Okayama 719-1121, Japan  
TEL +81 866-94-9011 FAX +81 866-94-1178  
http://www.coretec.co.jp/ E-mail:info@coretec.co.jp



## FEATURES

- 1 Light Weight and Slim with Inline Configuration**
  - The housing accommodates all integral parts; torque transducer, gears, motor, and encoder.
  - External moments can be absorbed by the housing to eliminate zero-balance fluctuations of torque transducer. → Increased reliability of tightening quality.
  - The slim and flat body allows for multiple spindle applications with minimum center distances.
- 2 Full Digital Processing**
  - Torque transducer with built-in amplifier and AC/DC converter board.
  - Improved noise resistance by transferring AC/DC converted digital signals to the controller.
  - Easy tool change with no analog adjustments.
- 3 Multiple Tightening Methods**
  - Full operations from start of tightening to finish performed by a single program (32 steps max.)
  - The IPS can store up to 31 programs.
  - Applicable to yield point control method as well as torque control and angle control.
- 4 Various Data Processing Software**
  - The controller memory can store up to 2700 data.
  - Data Control Filing System (DATA-CON) available as an option. (Capable of storing, searching and verifying collected data)

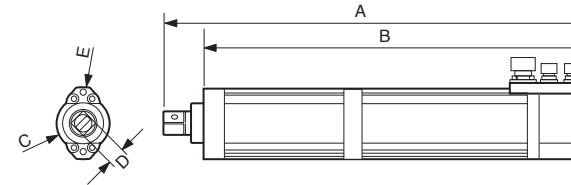
### SYSTEM CONFIGURATION



## 2500Series

### MIDDLE TORQUE RANGE MODEL (20 - 160Nm)

Model No.	Torque Range (Nm)	Maximum RPM (rpm)	Tool Weight (kg)
2505S	19~56	610	5.5
2509S	33~94	285	5.5
2515S	42~120	285	5.5
2510S	24~68	490	5.7
2520S	57~162	230	5.7



Model No.	A	B	φC	□D	φE
2505S/2509S	430	394	56	12.7	76
2515S	460	417	56	19.05	76
2510S/2520S	518	475	56	19.05	76 (mm)

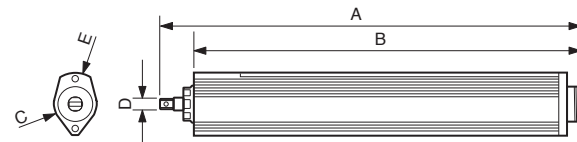


Please contact us for angle head and offset gear applications. We will provide a separate leaflet.

## 2300Series / 2400Qseries

### LOW TORQUE RANGE MODEL (2 - 40Nm)

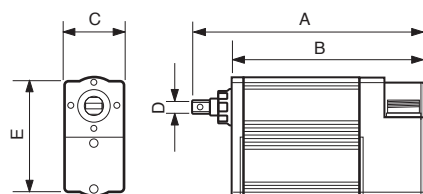
Model No.	Torque Range (Nm)	Maximum RPM (rpm)	Tool Weight (kg)
2301S	2~6	1080	1.8
2302S	5~22	540	1.9
2304S	12~34	250	1.9



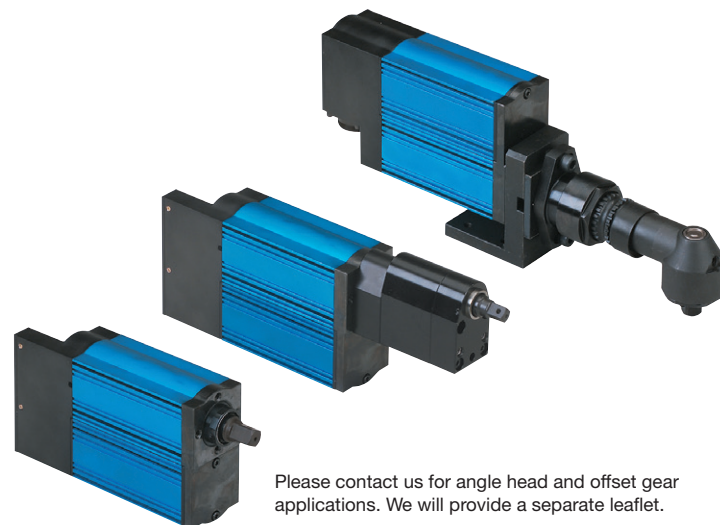
A	B	φC	□D	φE
367	338	38	9.5	54 (mm)

Please contact us for angle head and offset gear applications. We will provide a separate leaflet.

Model No.	Torque Range (Nm)	Maximum RPM (rpm)	Tool Weight (kg)
2402Q	6~17	410	3.3
2405Q	16~47	190	3.3



A	B	C	□D	E
215	179	54	12.7	109 (mm)



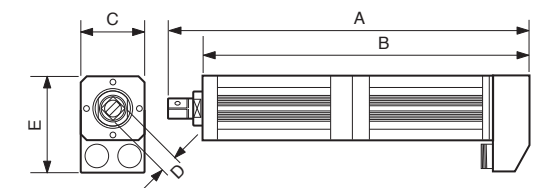
Please contact us for angle head and offset gear applications. We will provide a separate leaflet.

## 2600Series / 2600Qseries

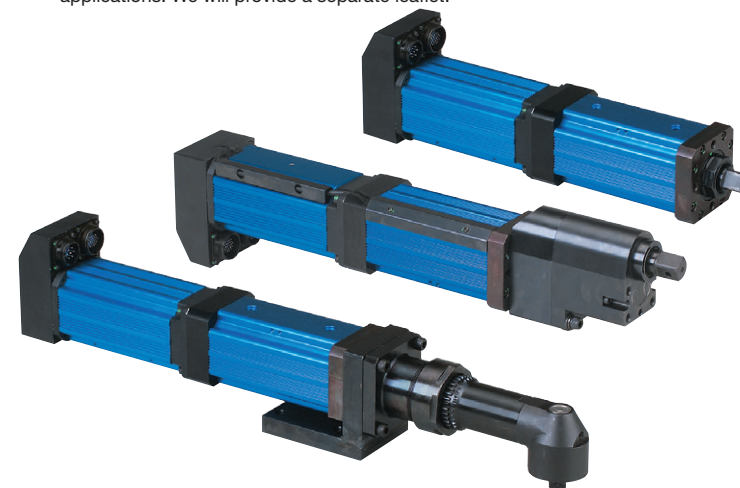
### HIGH TORQUE RANGE MODEL (100 - 270Nm)

Please contact us for angle head and offset gear applications. We will provide a separate leaflet.

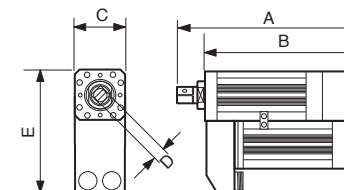
Model No.	Torque Range (Nm)	Maximum RPM (rpm)	Tool Weight (kg)
2620S	63~179	240	9.0
2630S	93~264	170	9.0



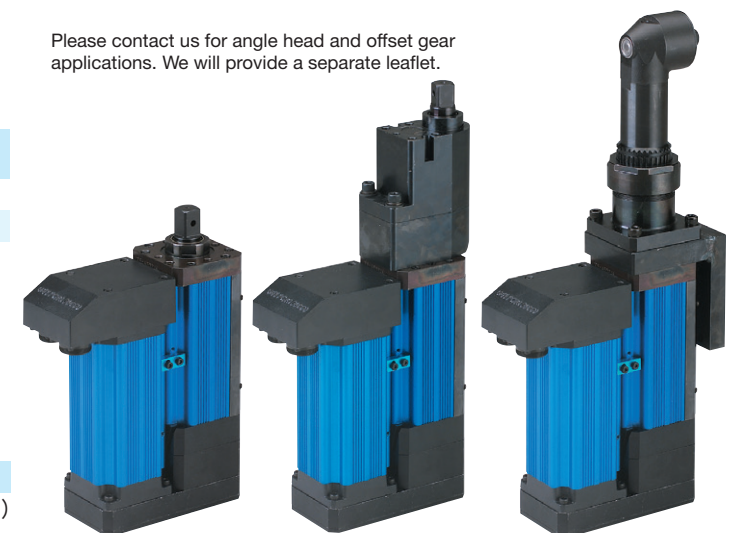
A	B	C	□D	E
445.5	402.5	79	19.05	118.5 (mm)



Model No.	Torque Range (Nm)	Maximum RPM (rpm)	Tool Weight (kg)
2620Q	63~180	240	9.5
2630Q	90~255	170	9.5



A	B	C	□D	E
287.5	244.5	79	19.05	198.5 (mm)



Please contact us for angle head and offset gear applications. We will provide a separate leaflet.